

# Integrated ESG Solutions for Sustainable Growth

Expert Consulting for ESG Solutions

# Expert Consulting for ESG Solutions

## CONTENTS

- 01 Company Overview
- 02 Vision and Mission
- 03 Core Competencies
- 04 Business Areas
- 05 Business Areas
- 06 ESG Consulting Process
- 07 Expert Network
- 08 Why SCB

# 01 Company Overview



The Solution Company **B**

The Solution Company B is a specialized consulting firm that supports the establishment and implementation of ESG (Environmental, Social, Governance) management strategies for sustainable growth of companies. Recognizing the importance of ESG management in the rapidly changing global business environment, we provide optimal ESG strategies and solutions tailored to our clients.

We have a pool of consultants consisting of experts in various fields such as environment, society, finance, and law, and based on this, we provide comprehensive and practical ESG consulting services. The Solution Company B is doing its best to create sustainable value and strengthen competitiveness for client companies.

The Solution Company B will not only diagnose and analyze the problems faced by clients, but also propose and create ways to continuously grow together.

The Solution Company B has the name Solution Company, which proposes customized solutions for success, rather than being called a consulting firm.

[tscbgroup.com](https://www.tscbgroup.com)

Company Name The Solution company B | Established 2014.04.01 | CEO Junkyu Shim

Address 17-1, Indeogwon-ro 24beon-gil, Dongan-gu, Anyang-si, Gyeonggi-do, Korea | Tel +82 70-7743-0723

## 02 Vision and Mission

**B is equipped with professional experience**

**B shares various knowledge**

**B creates new value for the world**

**B goes beyond success...**

### VISION

**A world where all companies achieve sustainable growth by creating ESG values**

### MISSION

**Supporting companies' sustainable value creation through ESG management**

We contribute to the long-term enhancement of corporate value by strengthening clients' ESG capabilities..

**Developing innovative and feasible ESG solutions**

We continuously develop practical solutions reflecting the latest ESG trends and technologies..

**Sharing and spreading professional knowledge**

We share ESG knowledge and insights through seminars, educational programs, and publications.

### What's different

The Solution Company B is composed of experts in the field of management strategy and provides optimal knowledge service. We provide professional services in the following key business areas for the sustainable growth of companies.

#### Establishing an integrated ESG strategy

- Analysis linking corporate business models and ESG
- Deriving important industry-specific ESG issues
- Designing short-term, mid-term and long-term ESG roadmaps

#### Utilizing expert networks

- Building a pool of experts in the fields of environment, society, and governance
- Operating an industry-academia-government cooperation system
- Partnerships with global ESG specialized institutions

#### Measuring and managing ESG performance

- Developing ESG evaluation indicators based on global standards
- Establishing a customized ESG performance monitoring system
- Deriving data-based ESG improvement measures

#### Managing ESG risks

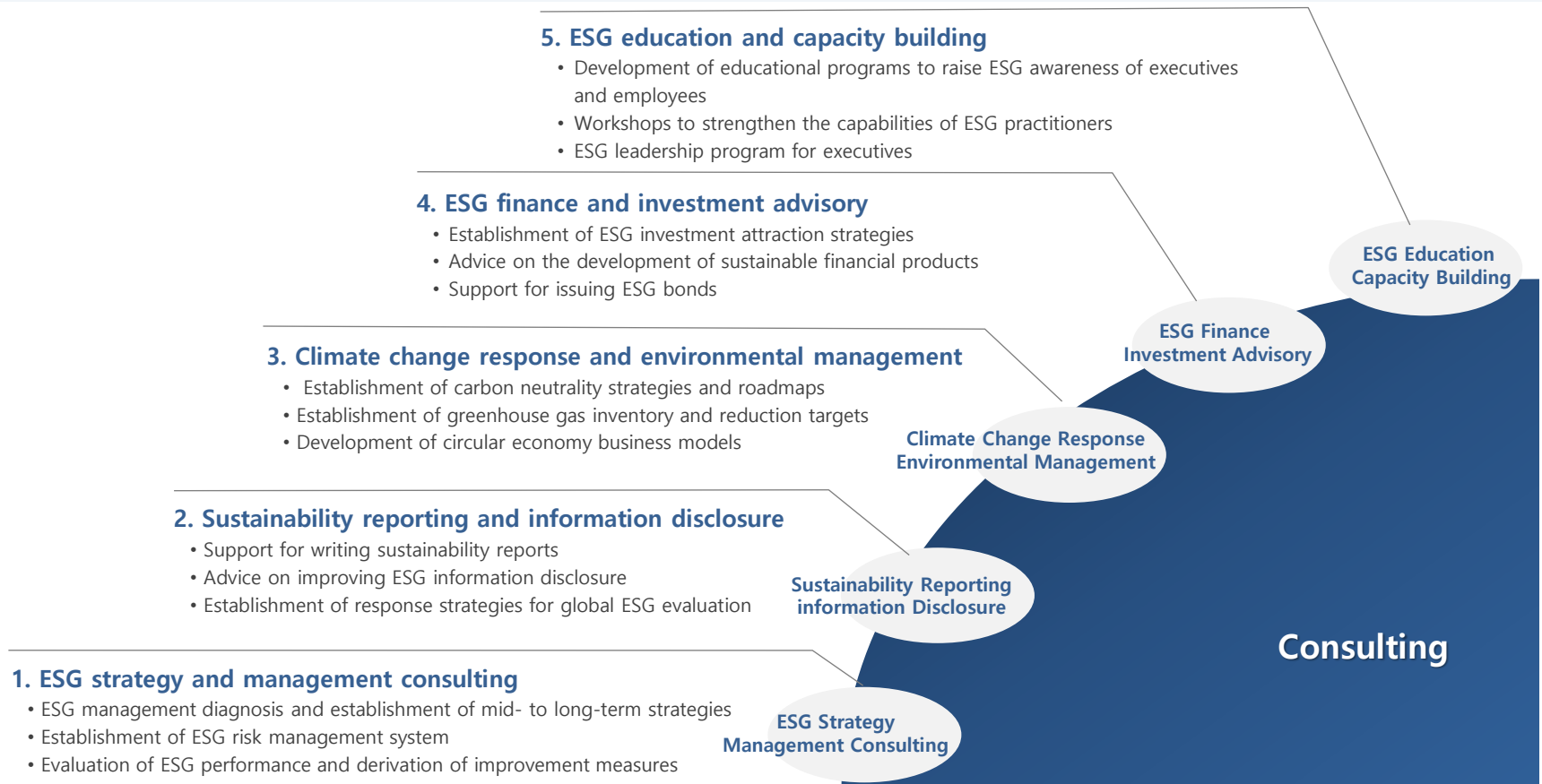
- Identifying and analyzing the impact of ESG risks by industry
- Establishing ESG risk response strategies based on scenarios
- Developing an ESG risk early warning system

#### Analyzing global ESG trends

- Monitoring international ESG regulations and policy trends
- Analyzing ESG management cases of global leading companies
- Identifying trends in new ESG-related technologies and innovations

## What B do

The Solution Company B presents the best solutions for enhancing clients' ESG management and sustainable growth based on detailed core capabilities. Our expertise and experience will greatly help clients become leaders in ESG management.



### B's service

We develop and provide major services with our own specialized capacity-building programs to strengthen companies' ESG management capabilities.

#### 1. Employee ESG capacity building education

- Target: All employees
- Contents: ESG basics, global trends, corporate case studies
- Method: Online lectures, workshops, seminars

#### 2. Executive ESG leadership program

- Target: CEO, executives
- Contents: ESG strategy establishment, risk management, decision-making framework
- Method: 1:1 coaching, roundtable, benchmarking of overseas leading companies



#### 3. ESG practitioner competency enhancement course

- Target: ESG practitioners
- Contents: ESG performance management, report writing, stakeholder communication
- Method: Practice-oriented intensive training, expert mentoring

#### 4. Industry-specific ESG education

- Target: Employees in specific industries
- Contents: Industry-specific ESG issues, regulatory responses, innovation cases
- Method: Invited lectures by industry experts, panel discussions

## B's service

We comprehensively strengthen clients' ESG management capabilities and lay the foundation for sustainable growth. Based on our expertise and experience, we provide optimal solutions tailored to each company's situation..

### 1. ESG management diagnosis and strategy establishment

- Current status diagnosis: ESG performance analysis, gap analysis
- Strategy establishment: Development of mid- to long-term ESG roadmap, setting KPIs
- Implementation plan: Deriving departmental tasks, establishing a monitoring system

### 2. Writing sustainability reports

- Report planning based on international standards (GRI, SASB, etc.)
- Support for materiality assessment and stakeholder engagement process
- Report writing and verification response

### 3. Carbon neutrality strategy establishment and implementation support

- Establishment of greenhouse gas inventory
- Setting reduction targets and establishing roadmaps
- Discovery and implementation support of reduction measures

### 4. ESG performance improvement consulting

- Analysis of ESG evaluation results and derivation of improvements
- Application of best practices through benchmarking
- Support for the implementation of customized improvement tasks



### 3. Establishment of ESG risk management system

- Identification and assessment of ESG risks
- Establishment of risk response strategies
- Establishment of monitoring and reporting system

### 6. Improving ESG information disclosure

- Establishment of disclosure regulation response strategies
- Establishment of ESG information management system
- Establishment of ESG communication strategies for investors



## Solution Process

We will diagnose the business activities you are planning and the business you are currently conducting and fulfill your company's needs. Not simply ending with a consulting result report, we have a system in place to normalize corporate management activities and achieve quantified goals through a thorough follow-up management program.

- 1 Initial consultation and needs identification** Listen to the client's current situation and ESG-related needs / Understand industry characteristics and corporate culture / Set project scope and goals
- 2 ESG status diagnosis** Collect and analyze ESG performance data / Gap analysis according to global ESG evaluation criteria / Benchmarking within the industry and research on best practices
- 3 Strategy establishment** Set ESG vision and mid- to long-term goals / Derive and prioritize key ESG issues / Develop ESG management roadmap
- 4 Implementation plan establishment** Derive detailed tasks by department/topic / Set KPIs and goals for each task / Designate implementation schedule and responsible persons
- 5 Implementation support and monitoring** Provide expert advice for task execution / Regular progress check and feedback / Support for establishing a performance monitoring system
- 6 Performance evaluation and reporting** Collect and analyze ESG performance data / Evaluate achievement against goals / Support for writing sustainability reports
- 7 Improvement and advancement** Analyze consulting results and effectiveness / Derive and propose additional improvements / Establish mid- to long-term ESG advancement measures
- 8 Follow-up management** Provide regular ESG trend updates / Advise on responding to new ESG issues / Operate continuous employee education programs

## B's Confidence

Through cooperation with experts in various fields, we are preemptively responding to the rapidly changing ESG management environment and contributing to the sustainable growth and value creation of our clients. In the future, we will continue to expand our expert network and strengthen our expertise to become an innovative solution partner leading ESG management..

### Policy and legal experts

- Composed of former/current government officials and legal experts well-versed in ESG-related policies and regulations
- Analyzing domestic and international ESG policy and regulatory trends and advising on response strategies
- Advising on ESG-related legal risk management and compliance

### Finance and investment experts

- Composed of responsible investment and ESG evaluation & disclosure experts
- Analyzing global ESG investment trends and institutional investor requirements
- Advising on ESG information disclosure and establishment of sustainable finance frameworks

### Academic experts

- Composed of renowned professors in the fields of environment, society, and management
- Providing advice based on the latest ESG research trends and theoretical foundations
- Carrying out industry-academic cooperation projects with universities and research institutes

### Industry experts

- Composed of field experts well-versed in ESG issues in various industries
- Proposing customized solutions tailored to the characteristics of each industry based on extensive practical experience
- Providing industry-specific best practices and benchmarking information



### Technology and data experts

- Composed of experts in ESG data management, analysis, and utilization
- Developing ESG solutions utilizing cutting-edge technologies such as AI and big data
- Advising on ESG data collection, processing, visualization, and external disclosure

## Trusted success partner

We will become a true partner for sustainable growth and support you to become a leading company in ESG management

### Expertise and integrated approach

- A team of consultants consisting of experts in each ESG field
- Providing comprehensive solutions covering environment (E), society (S), and governance (G)
- Establishing ESG strategies considering the entire value chain of the company

### Customized implementation-oriented consulting

- An individualized approach that accurately identifies the characteristics and needs of the client
- Providing implementation support for actual change beyond simple advice
- Performance improvement through continuous monitoring and feedback

### Services based on global standards

- Advanced solutions reflecting international standards and global trends
- Providing world-class insights through global partnerships
- Rapid response system to new ESG regulations or issues

### Utilization of innovative technology

- ESG data analysis and management utilizing cutting-edge technologies such as AI and big data
- Providing digital-based ESG performance monitoring tools
- Realizing high efficiency compared to cost

### Continuous partnership

- Establishing long-term partnerships, not one-time consulting
- Providing regular ESG trend briefings and educational programs
- Utilizing expert networks in various fields such as academia, industry, and government

# The Solution Company **B**

[tscbgroup.com](http://tscbgroup.com)

17-1, Indeogwon-ro 24beon-gil, Dongan-gu, Anyang-si, Gyeonggi-do, Korea

T. +82 70 7743 0723

Email [info@tscbgroup.com](mailto:info@tscbgroup.com)